



PROFILE & FEATURES

ENQUIRIES: SALES@GAEYAH.COM | 8754422004/+918072746780

DISPATCHES: SUPPLYCHAIN@GAEYAH.COM | +919884733803

SERVICE RELATED: GAEYAHTRANSMISSION@GMAIL.COM | +918754422004



VISION:

**'GAEYAH'S VISION IS TO OFFER AFFORDABLE POWER TRANSMISSION SOLUTIONS,
EMPOWERING CUSTOMERS TO IMPROVE THEIR PRODUCT PERFORMANCE'**

VALUES

OUR WORK WILL BE GUIDED AND INFORMED BY OUR BELIEFS AND COMMITMENTS TO:

INCLUSIVENESS- RESPECT ALL LIVING BEING

HONESTY- UPRIGHT & FAIR

COMMITMENT- PROMISE TO PERSEVERE

INNOVATE- CONTEMPORARY SOLUTION

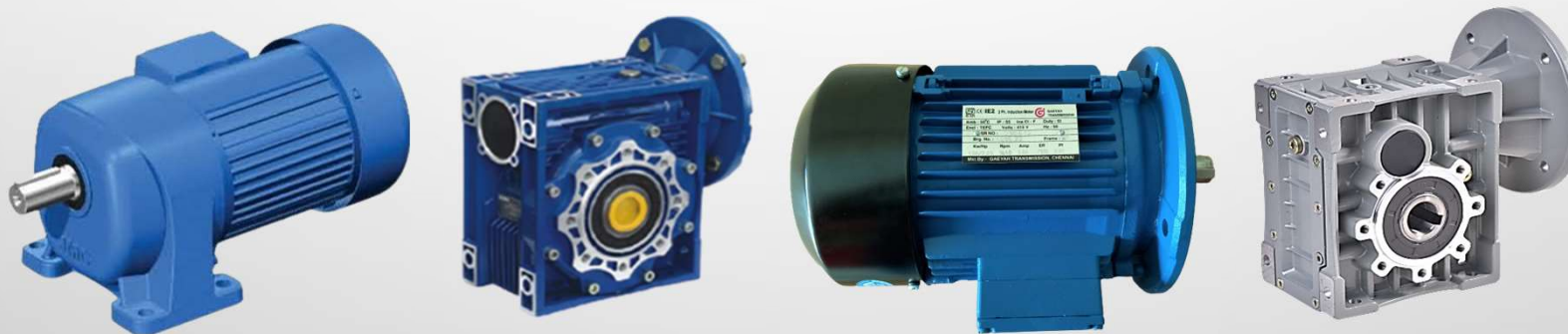
PASSION- EMPATHIZE & LISTEN



MANUFACTURING UNIT & REGD. OFFICE:

No.:17/3B, Avadi Main Road, G J Complex, Seneerkuppam, Madras-600056.

GST No.: 33AAVFG7925K1ZR | gaeyahtransmission@gmail.com | URL: www.gaeyah.com



SALES PARTNER'S:

MUMBAI, PUNE, BANGALORE, HYDERABAD, CHENNAI, COIMBATORE, MADURAI, NAGPUR, KAKINADA

WWW.GAEYAH.COM | SALES@GAEYAH.COM | +91 8754422004



INDUSTRY TODAY

- DECLINING EXPERTISE IN APPLICATIONS
- EVEN LEADERS INDULGE IN PROMOTING LOW EFFICIENT PRODUCTS
- PRODUCTS ARE SELECTED BASED ON EMPIRICAL CALCULATION AND NOT ON ACTUAL LOAD CONDITION
- LOOKING AT END USER ISSUES, THROUGH THE EYES OF EQUIPMENT MANUFACTURERS IS MISSING
- TRADERS, DO NOT HAVE REQUIRED SKILLSET TO SELECT PRODUCTS.
- BRAND LOYALTY MANY TIMES MISUSED TODAY

GAEYAH SOLUTION

- CUSTOMERS ARE OPEN TO TECHNOLOGY CHALLENGES... OPPORTUNITY FOR NEW METHODS AND PROCESSES.
 - LOOK FOR NEW SOLUTIONS...USING EFFICIENT PRODUCTS
 - CONSULTATION SELLING BY EXPERTS HAVING 20+ YEARS EXPERIENCE IN VARIOUS APPLICATIONS
 - PROFESSIONAL SALES, SERVICES & SOLUTION PROVIDERS THROUGH AN EXPERIENCED NETWORK ACROSS INDIA
 - AN ORGANIZED SETUP SOURCING BEST IN CLASS PRODUCTS AND DELIVER IMPROVED VALUE TO CUSTOMERS, EFFICIENTLY
 - TRANSPARENCY IN COMMUNICATION AND MEETING COMMITMENTS...TECHNICAL AND COMMERCIAL
 - TECHNICAL SUPPORT OVER VIDEO AND SITE VISITS (AFTER COVID) AS AND WHEN REQUIRED
 - BACKED UP BY A CENTRALIZED EFFICIENT APPLICATION TEAM IN CHENNAI

GAEYAH COMMITMENT

- GAEYAH TO IDENTIFY RIGHT SUPPLY PARTNERS, BASED ON MARKET FEEDBACK AND PRODUCT PERFORMANCE.
- GAEYAH WILL INVEST ON RESOURCES TO PROVIDE BEST IN CLASS PRESALES SUPPORT
- SOURCES RIGHT QUALITY PRODUCTS SUPPLIERS KEEPING CUSTOMER INTERESTS IN MIND
- EQUIP SALES PARTNERS ON APPLICATIONS AND PRODUCT KNOWLEDGE TO MEET THEIR CUSTOMER TECHNICAL EXPECTATION
- ADEQUATELY SUPPORTING SALES PARTNERS, IN
 - PRESALE AND POST SALE PROCESSES
 - PRODUCT CATALOGS AND TECHNICAL BACKUP
 - CIRCULATING CASE STUDIES TO IMPROVE APPLICATION AND SERVICE SKILLS
 - SEAMLESS MARKET FEEDBACK TO ENSURE SALES PARTNERS ADDRESS CUSTOMER ISSUES ON TOP MOST PRIORITY.
- **ORDERING AND INVENTORY PORTAL: [HTTPS://TINYURL.COM/GAEYAHSALESFORM](https://tinyurl.com/gaeyahsalesform)**
 - **SALES PARTNERS/ CUSTOMERS CAN ENTER ORDER IN ONLINE FORM AVAILABLE IN [WWW.GAEYAH.COM](http://www.gaeyah.com) PORTAL.**

UNIQUE SUPPORT OF SALES PARTNER

- WELL EXPERIENCED TEAM OF PARTNERS..
- ALL PARTNERS HAVING APPLICATION EXPERTISE OVER 15/20 YEARS IN ALL INDUSTRY SEGMENTS
- ALL OF THEM WITH ENGINEERING BACKGROUND AND PROFESSIONAL IN THEIR APPROACH
- BEING OWNERS, THEY ARE COMMITTED TO THEIR CUSTOMER CAUSE
- SUPPORT GAEYAH, WITH MARKET FEEDBACK ON PRODUCT TECHNOLOGY AND CHANGES AT CUSTOMER END TO PROVIDE COTEMPORARY SOLUTIONS
- PARTNERS PROXIMITY TO CUSTOMERS HELP THEM IN
 - STOCKING OF MATERIAL
 - PROVIDING ON TIME DELIVERY BASED ON CUSTOMER NEED
 - QUICK RESPONSE TO SERVICE ISSUES IF ANY
- DEFINED ROLE CLARITY OFFERS SEAMLESS & EFFECTIVE COMMUNICATION



WORM GEAR REDUCER

GWM 025 - 150
GW 025 - 150
GWM/GW 030 - 150
RATIO 7.5 TO 10000:1

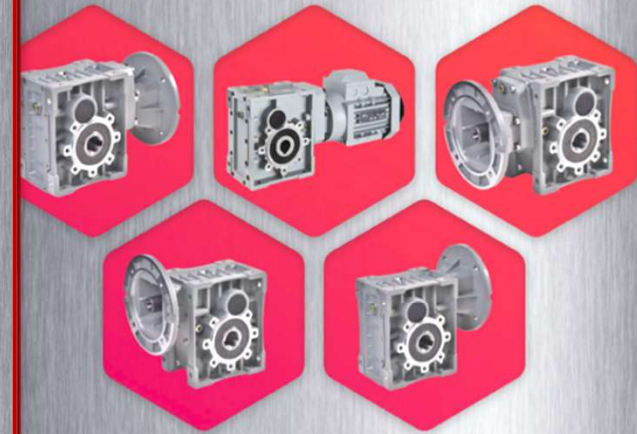


Helical Gear Reducer

GCLM 028 - 050
GCFM 028 - 050
RATIO: 05 - 200



GEM SERIES ELECTRIC MOTOR

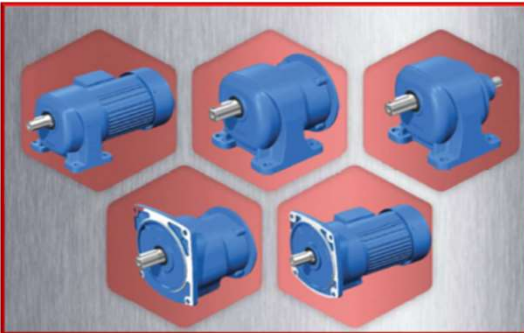


HYPOID GEAR REDUCER

GPMB - GPMC
GPMB - M - GPMC - M
TORQUE RANGE : 130 Nm - 500 Nm
RATIO RANGE : 7.5 - 295
EFFICIENCY : 93%

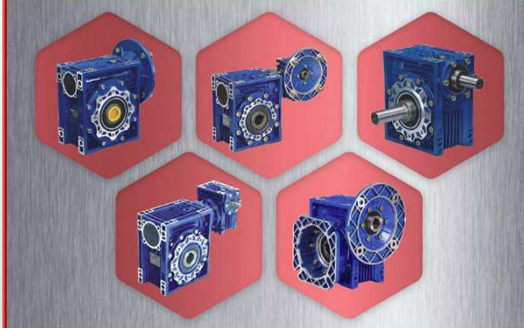
PRODUCT PORTFOLIO

PRODUCT CATALOGS



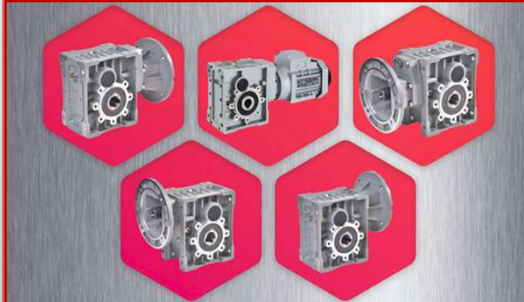
Download Catalog: **Helical**

https://drive.google.com/file/d/1w8D4jC0niljNAXo4XQHOLWkZORbu_VNw/view?usp=sharing



Download catalog: **Worm**

<https://drive.google.com/file/d/1xM53d2xAut8V2JKkZNtda572q0wXNAhz/view?usp=sharing>



Download catalog: **Hypoid**

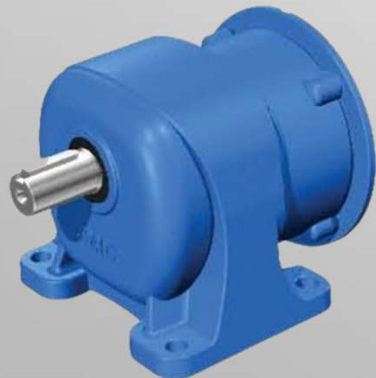
<https://drive.google.com/file/d/1xmGG-3BLGhSWb5TyqQx5NaDfGfD3KXqz/view?usp=sharing>



Download catalog: **IE2 Gem Series Electric Motor**

<https://drive.google.com/file/d/1w66thNWxd9bJHz1-MmuGkwwBvjFNfv6N/view?usp=sharing>

PRODUCT CONFIGURATION



WORM OR HYPOID??

Ideal Model To Use	Sizes	Model/ Ratio	7-30	40-60	60-100	100- 300
	GWM 30- 40	Worm	Y			
	GAH 50- 90	Hypoid	X	Y	Y*	Y [#]
	GWM 49- 90	Worm	Y	X	Y	X
	GWM 110-150	Worm	Y			

WORM

HYPOID

Ratios <15/1 good η . GWM ideally suitable

Ratios >20-60 medium η . Both GPM and GWM used

Ratios >60/1 low η . Use GPM if not affordable use GWM

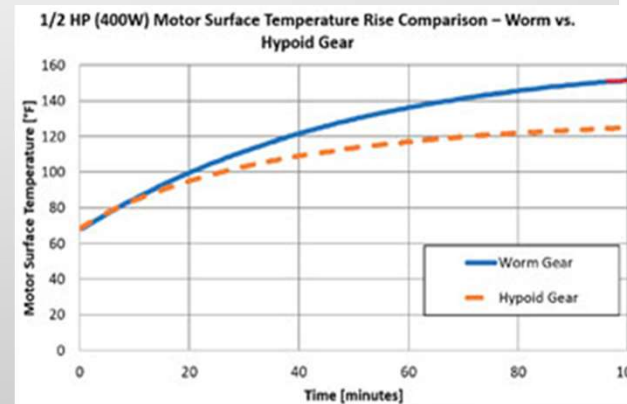
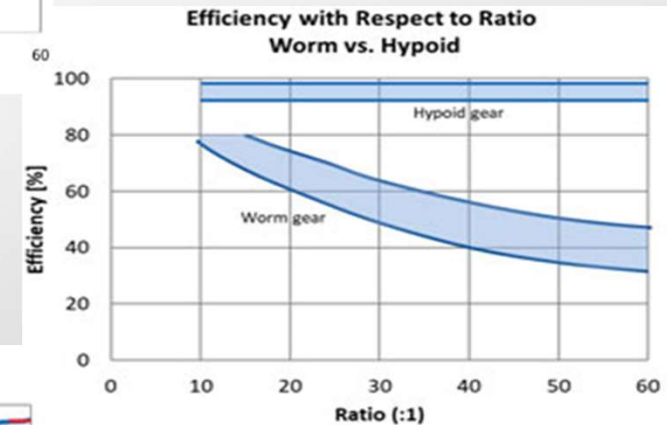
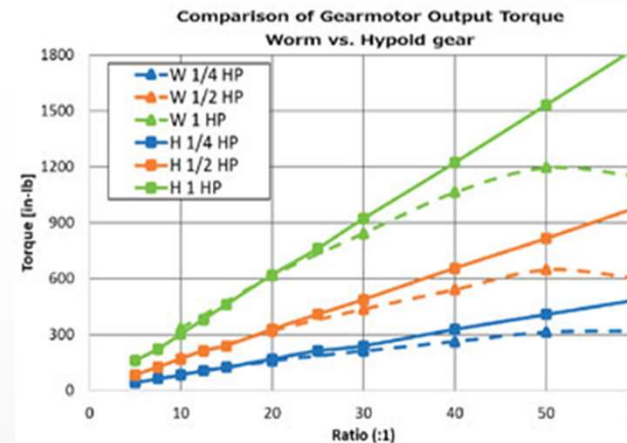
Expensive over GWM- Reduce Motor frame by one or two sizes as hypoid deliver >93% η

Comparatively reduced prices against GWM combination units and heli worm units

SISO offering in GPM range is standard...flexibility to stock.

WHY HYPOID??

- HYPOID DESIGN ALLOWS THEM TO RUN MORE EFFICIENTLY, COOLER, AND PROVIDE HIGHER REDUCTION RATIOS WHEN COMPARED TO WORM REDUCERS
- HYPOID GEARMOTORS CAN HANDLE HIGHER INITIAL INERTIA LOADS AND TRANSFER MORE TORQUE WITH A SMALLER MOTOR THAN A COMPARABLE WORM GEARMOTOR
- THIS CAN LEAD TO UPFRONT SAVINGS BY ALLOWING THE USER TO PURCHASE A SMALLER MOTOR
- LONG-TERM SAVINGS IN ELECTRICAL AND MAINTENANCE COSTS
- HYPOID GEARMOTORS TO BE A BETTER OPTION IN SPACE-CONSTRAINED APPLICATIONS & CAN BE USED FOR MANY STARTS AND STOP/ HR APPLICATIONS WITH SUITABLE SERVICE FACTOR AND SPLINE INPUT SHAFT
- THE OVERALL FOOTPRINT AND SYMMETRIC DESIGN OF HYPOID GEARMOTORS MAKES FOR A MORE AESTHETICALLY PLEASING DESIGN WHILE IMPROVING WORKPLACE SAFETY; WITH SMALLER, LESS CUMBERSOME GEARMOTORS THERE IS A SMALLER CHANCE OF INTERFERENCE WITH WORKERS OR MACHINERY
- BESIDES BEING HIGHLY EFFICIENT, HYPOID/HELICAL GEARMOTORS ARE COMPACT IN SIZE AND SEALED FOR LIFE
- THEY ARE LIGHT, RELIABLE, AND OFFER HIGH TORQUE AT LOW SPEED UNLIKE THEIR WORM COUNTERPARTS
- HYPOID UNITS ARE PERMANENTLY SEALED WITH AN ELECTROSTATIC COATING FOR A HIGH-QUALITY FINISH THAT ASSURES



APPLICATIONS & DUTY

AIR BLOWERS		Hoisst gear assembly	A
Air blower(axial or radial)	A	Derrick gear assembly	B
Fan of cooling tower	B	Stering gear assembly	B
Induced draught fan	B	Moving gear assembly	C
Rotary piston type fan	B	LAND DREDGER	
Turbo-fan	A	Drum-type coveyer	C
CONSTRUCTION MACHINERY		Drum-type rotation wheel	C
Concrete mixer	B	Dredger head	C
Hoist	B	Powered crab	B
Road building machinery	B	Pump	B
Boring mill	B	Pump turning gear assembly	B
CHEMICAL MACHINERY		Moving gear assembly (apron wheel)	C
Mixer (liquid)	A	Moving gear assembly(track)	B
Mixer (half liquid)	B	FOODSTUFF PROCESSING MACHINERY	
Centrifuge (heavy)	B	Placer or box filler	A
Centrifuge (light)	A	Cane crusher	A
Cooling rolling drum	B	Cane cutter	B
Dry rolling drum	B	Cane crasher	C
Mixer	B	Mixer	B
COMPRESSOR		Paste bucket	B
Piston type compressor	C	Packager	A
Turbo-compressor	B	Beet slicer	B
TRANSMISSION FREIGHTER		Beet washing machine	B
Pan conveyer	B	MOTOR AND CONVERSION EQUIPMENTS	
Balance lifter	B	Frequency converter	C
Trough conveyer	B	Motor	C
Ribbon conveyer (large piece)	C	Welding motor	C
Ribbon conveyer (small piece)	B	WASHING MACHINE	
Drum-type flour conveyer	A	Rolling drum	B
Chain conveyer	B	Washing machine	B
Ring type conveyer	B	METAL ROLLER MACHINE	
Lifter	B	Steel cutter	C
Hoist	B	Chain conveyer	B
Crank-connecting conveyer	B	Cold mill	C
Lifter	B	Continuous casting equipments	B
Worm conveyer	B	Cold bed	B
Steel-band conveyer	B	Cropper	C
Chain reed-type conveyer	B	Cross steering transmitter	B
Crab freighter	B	Deruster	C
HOIST		Heavy and medium steel mill	C
Bracket swing gear assembly	B	Bar mill	C

BAR TRANSMISSION EQUIPMENTS		PUMPS	
Bar pusher	B	Centrifugal pump (thin liquid)	A
Push bed	B	Centrifugal pump (half liquid)	B
Shears	C	Displacement pump	C
Lumber elevator platform	B	Plunger pump	C
ROLL ADJUSTING EQUIPMENTS		Force pump	C
Roller lvevling machine	B	PLASTIC EQUIPMENTS	
Mill rolling way (heavy)	C	Glazing press	B
Mill rolling way (light)	B	Ejecting press	B
Sheet rolling mill	C	Spiral extruding machine	B
Trimming shears	B	Mixing machine	B
Pipe welder	C	RUBBER EQUIPMENT	
Soldering machine(belt material and wire rod)	B	Glazing press	B
Wire drawbench	B	Ejecting press	C
METAL PROCESSING MACHINE TOOLS		Mixing stir machine	B
Power shaft	A	Kneading machine	B
Drop hammer	C	Roller machine	C
Machine tool and necessary	C	STONE PORCELAIN CLAY PROCESSING EQUIPMENTS	
Machine tool and necessary	A	Ball crusher	B
Machine tool and main driving equipment	B	Ejecting press and breaker	C
Metal facing machine	C	Breaker	C
Plate-leveling machine tool	C	Brick press	C
Backing-out punch	C	Beating crusher	C
Press machine tool	C	Converter	C
Cutting machine	B	Cylinder mill	C
Sheet bending machine tool	B	TEXTILE MACHINERY	
PETROLEUM PROCESSING MACHINERY		Feeding machine	B
Pump of oil pipe line	B	Loom machine	B
Rotary drilling equipment	C	Dyeing machine	B
PAPERING MACHINE		Purified drum	B
Glazing press	C	Welon machine	B
Multilayer paper board machine	C	WASTER TREATMENT EQUIPMENTS	
Drying cylinder	C	Air blast	B
Glazing cylinder	C	Screw pump	B
Masher	C	WOOD PROCESSING MACHINE TOOL	
Mashing and breaking machine	C	Barker	C
Suction roll	C	Facing machine	B
Wet oaoer roller machine	C	Saw bench	C
Water absorbing roller machine	C	Wood processing machine tool	A
Welon machine	C		

Note: A – Uniform bad; B – Moderate shock load; C – Heavy shock load; ** – for 24hour system.

Thank you.

Gaeyah appreciates your support and participation

**Your feedback is most important
PI share it liberally**